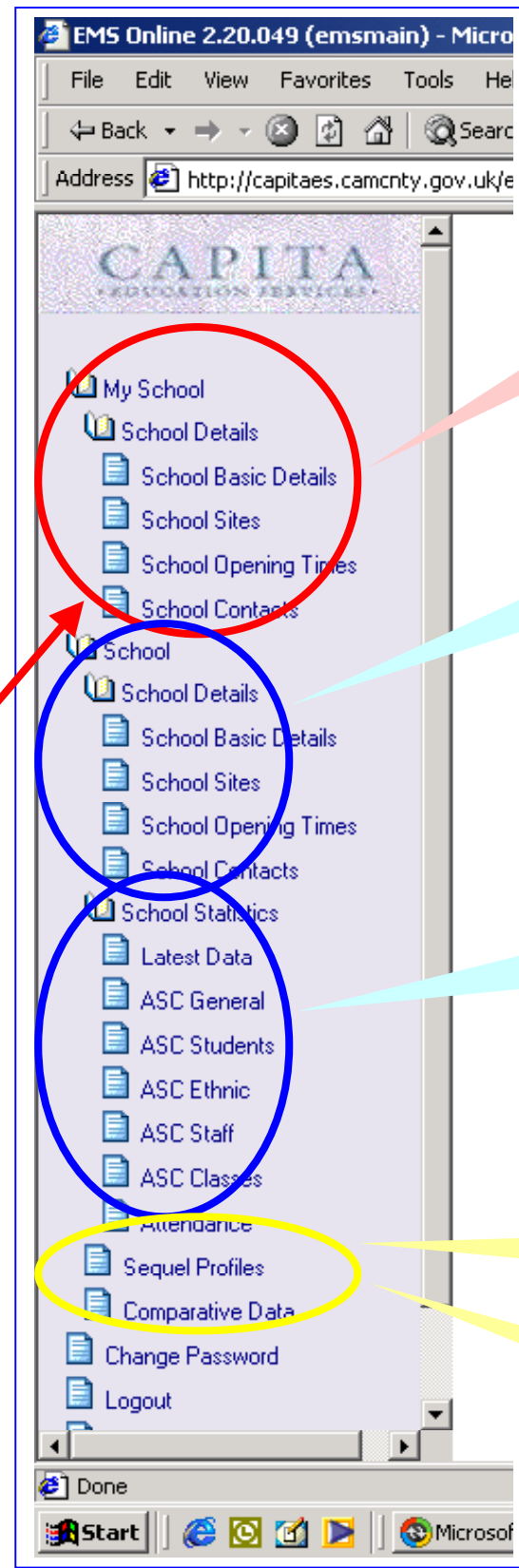
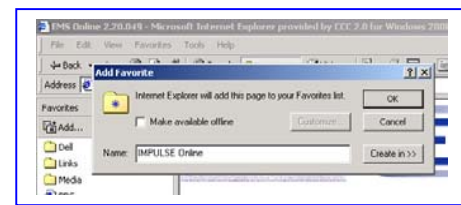


IMPULSE online help and guidance

access and navigation

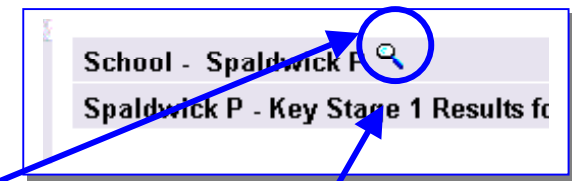
- Open up internet explorer to access Camweb or your "home page"
- Type in the IMPULSE online address (URL)
http://capitaes.camcnty.gov.uk/ems/ems_home.asp
- Add this site address to your "favourites" folder



"My School" opens to reveal "School Details" pages for the logon school:

- **basic details** (statutory details)
- **sites** (basic contact/location)
- **opening times** (term dates)
- **contacts** (linked LEA contacts and school responsibility contacts)

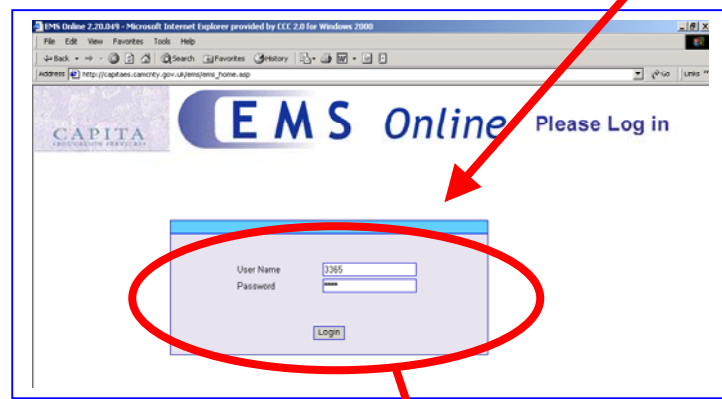
Similar "School Details" pages for any school chosen through the "school chooser browser"



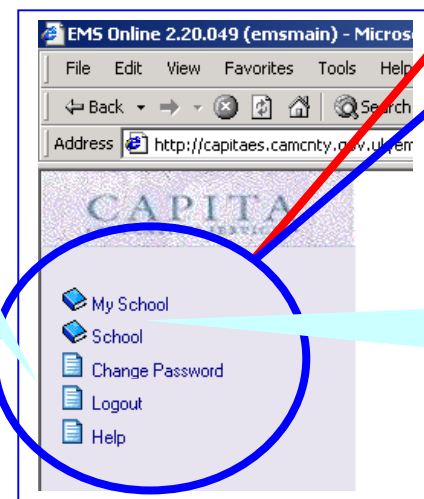
"School Statistics" information based on PLASC and Data Exchange "latest data" can be displayed under different categories for any school chosen through the "school chooser browser"

"Sequel Profiles" provides school level performance data information for all Key Stages with the ability to display data in tabular or chart format for one year or trend data for 3 years

"Comparative Data" enables the display of data for a single school compared with a range of "benchmark" type groups. Tables and charts can be produced for detailed performance analysis and statistical data



Other icons can be used to perform specified functions



Click on "book" icons to open up full menu options